



children's  
specialty  
hospital

AT THE CENTER FOR DISCOVERY®

THE CENTER FOR  
DISCOVERY®



## **A Statewide Facility for Complex Disabilities**

Designed to Provide Answers

Designed to Keep Families Together





Letter from Center for Discovery  
President and CEO

**Dr. Theresa Hamlin**

Dear Friends,

As The Center's new President and CEO, I am so proud to share the vision of The Center for Discovery's Children's Specialty Hospital (CSH) with you – a culmination of 40 years of integrated research, therapeutic interventions and best practices.

This first-of-its-kind specialty hospital will transform the standard of care for children and adolescents with complex disabilities.

The Children's Specialty Hospital, at the base of the Catskill Mountains in Sullivan County, New York, will provide specialized assessment and short-term inpatient care for children with complex disabilities, as well as support for the whole family – because it is the whole family that feels the effects of caring for a loved one with a disability.

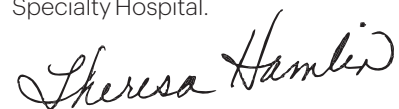
This beautiful new facility will be equipped with classrooms, a health clinic, sensory rooms, a therapeutic gymnasium for PT and OT, a café and a training kitchen. The 15-acre site also features outside walking trails, healing gardens and a new greenhouse where our patients will learn to grow food and later consume this nutritious bounty that they helped create.

After short-term treatment at the hospital, patients will return home with a specialized plan which will be incorporated in trainings with their families, caregivers and school districts. Our team of experts will remain a resource in this process as the child returns home to build on the progress made at the hospital.

This ambitious project has been developed over four decades by The Center for Discovery's distinguished team of medical professionals, therapists, teachers and nutritionists. It will allow us to extend TCFD's model of care to families throughout New York State and the country, with a goal of keeping families together longer, and reducing the need for long-term residential placement for their loved one.

We are privileged to help provide answers for those who need them – because that's what every family deserves.

Please enjoy this inside look at our Children's Specialty Hospital.



Dr. Theresa Hamlin  
President and CEO





# The Children's Specialty Hospital: Filling an Urgent Need

## THE CHALLENGE

### The Need for Services Has Never Been Greater

**1 in 36 children** have been identified with autism spectrum disorder (ASD) – and 26.7 percent of people with ASD have profound autism (CDC, 2023).

As children with complex disabilities become adolescents, they may require additional support at home and in their classrooms. Family members and educators may find it more difficult to engage and support them, especially if they present with challenging or maladaptive behaviors. These individuals often end up in emergency departments repeatedly or for extended periods of time.

New York State does not currently have any short-term, inpatient assessment programs for children with complex developmental disabilities, including ASD and medical frailties – **and with few options nationally, the need is urgent.** Tens of millions of individuals, along with their families, schools and caregivers, need better tools and more advanced insights.





# THE SOLUTION

## The Children's Specialty Hospital – A New Model of Care

In 2024, **The Center for Discovery will open a world-class Children's Specialty Hospital** to provide short-term, inpatient assessment and treatment – with the goal of better diagnosing underlying problems that affect behavior and learning in individuals with autism and other conditions. Improved understanding of underlying physiological, medical, and mental health challenges will lead to more targeted treatments and interventions, all to enable children and adolescents to remain at home, in school, and integrated in the community.

The Children's Specialty Hospital will conduct comprehensive medical, behavioral, and clinical assessments over a maximum of six months. Staff will engage parents, caregivers, and school district personnel as partners in the process.

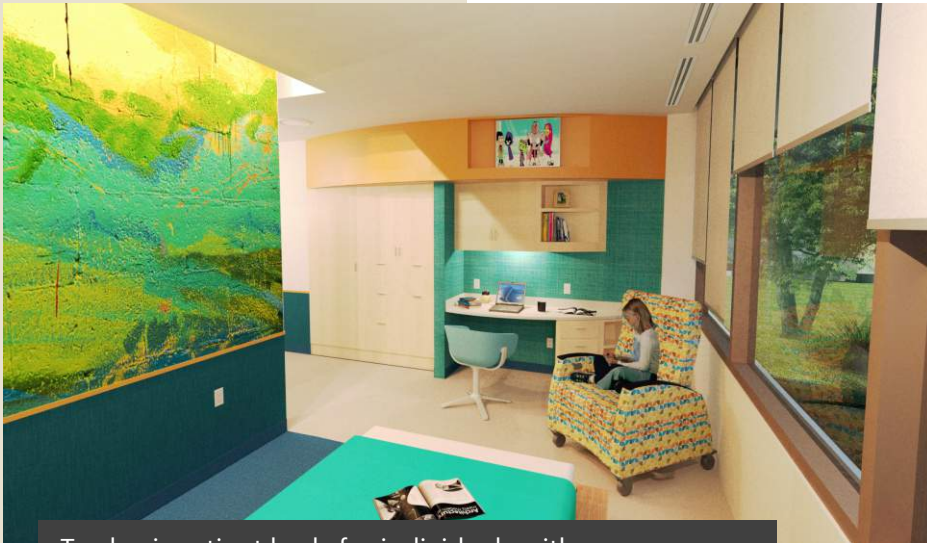
The Children's Specialty Hospital will significantly advance the continuum of services in New York State – and provide a **new model of care both nationally and internationally** that has the potential to make a profound impact.











Twelve inpatient beds for individuals with complex autism



Six inpatient beds for individuals with medical frailties



Certified Article 28 health clinic for primary, specialty, and dentistry services

“The new Children's Specialty Hospital in Rock Hill is The Center for Discovery's dream and a dream of mine. New York needs a short-term, inpatient assessment program for children with complex developmental disabilities. We also need to be at the forefront of groundbreaking research and treatment and there can't be any better group to do this than The Center.”

**Hon. Charles E. Schumer,**  
Majority Leader of  
the United States Senate

This is an urgently needed, **statewide facility that will elevate the standard of care** – and serve as a **model for the nation.**





Certified school program for children being treated at the hospital and local community students

With the necessary approvals, children can be admitted to the facility for short-term stays. We anticipate that the **average length of stay will be 6-8 weeks.**

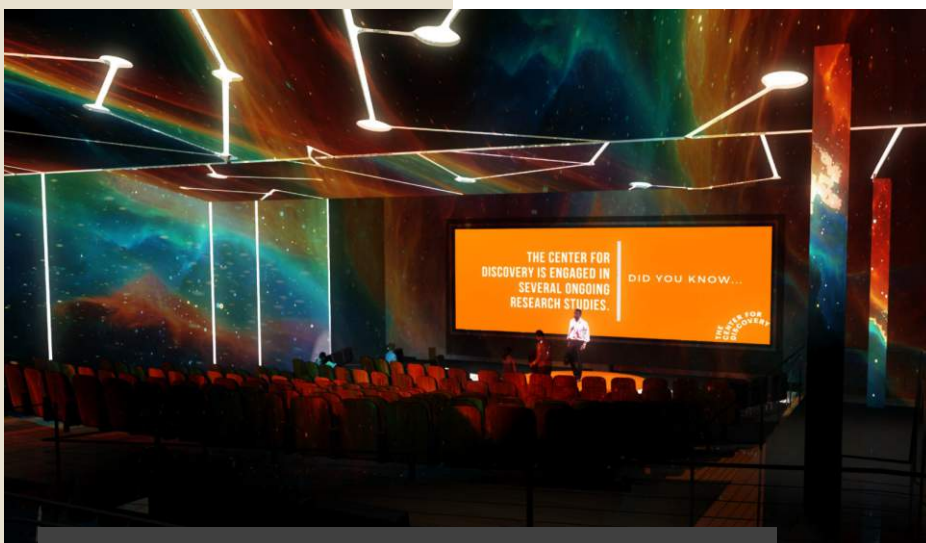


“My wife wouldn’t quit. She was calling every doctor, every service provider, following every lead. Our whole life was going from appointment to appointment, watching our children get every test imaginable, with no answers. It took a toll on our children and our marriage. The idea that families can come to The Children’s Specialty Hospital and feel like someone is holding their hands and walking with them through this... the sense of comfort is immeasurable.”

**Parent of 24 year old son with complex medical frailties**



The Research Institute for Brain and Body Health



Alemany Learning Center for education and training



“ The Center for Discovery's new Children's Specialty Hospital will help fill an overwhelming need to better support individuals with complex medical, behavioral, and social needs. I applaud The Center for Discovery for working to make this vision a reality.

**Courtney Burke,**

Senior Fellow of Healthcare Policy,  
Rockefeller Institute of Government;  
Former Chief Operating and  
Innovation Officer, Healthcare Association  
of New York State (HANYSS); Former  
Commissioner of OPWDD

”



The Children's Specialty Hospital is expected to **save New York State millions of dollars each year** by reducing the need for long-term residential care and emergency hospitalizations.



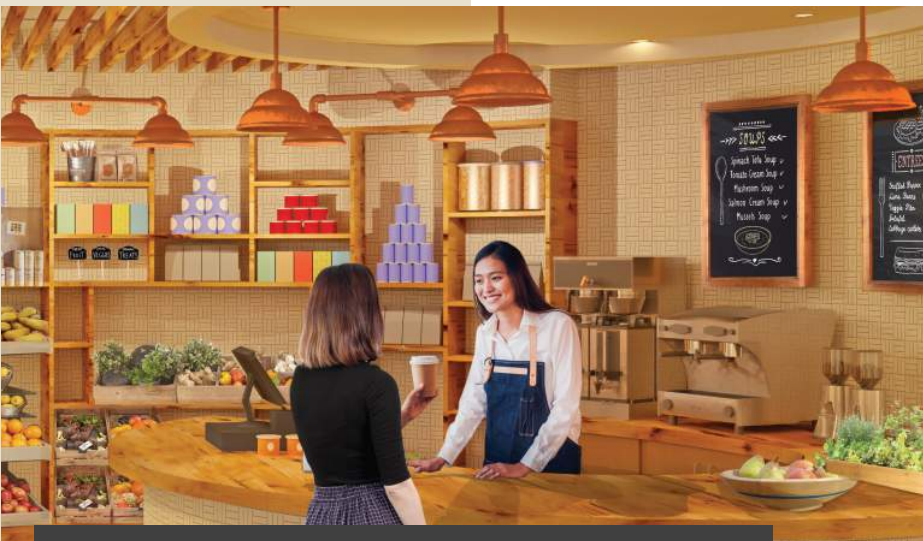




Gymnasium designed to support clinical services



Congressionally funded Food is Medicine® Greenhouse



Café and training kitchen designed to support nutrition education

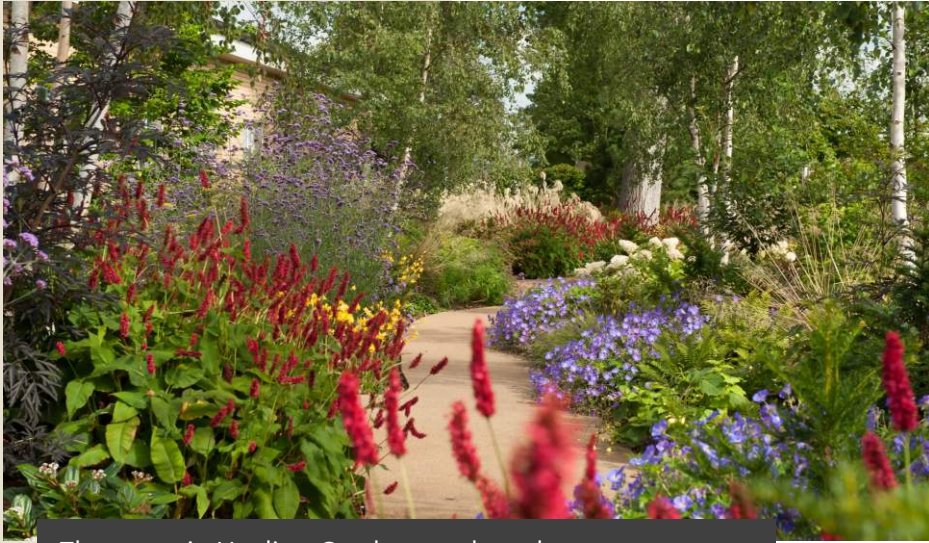
“When our son was first diagnosed, it was a nightmare – there was no support from our community and even though we were “the lucky ones” with the means to see any specialists, there was nowhere for us to turn. We felt so alone and lost. Now families’ experiences can be different; they will feel like they’re finally with people who understand – and can help them see a path forward.”

**Parent of teenage son with autism and complex co-morbidities**

The Children's Specialty Hospital will provide **specialized assessment and short-term inpatient care** for children with complex disabilities, along with **support and training for their families, caregivers, and school districts.**







Therapeutic Healing Gardens and outdoor recreational trails

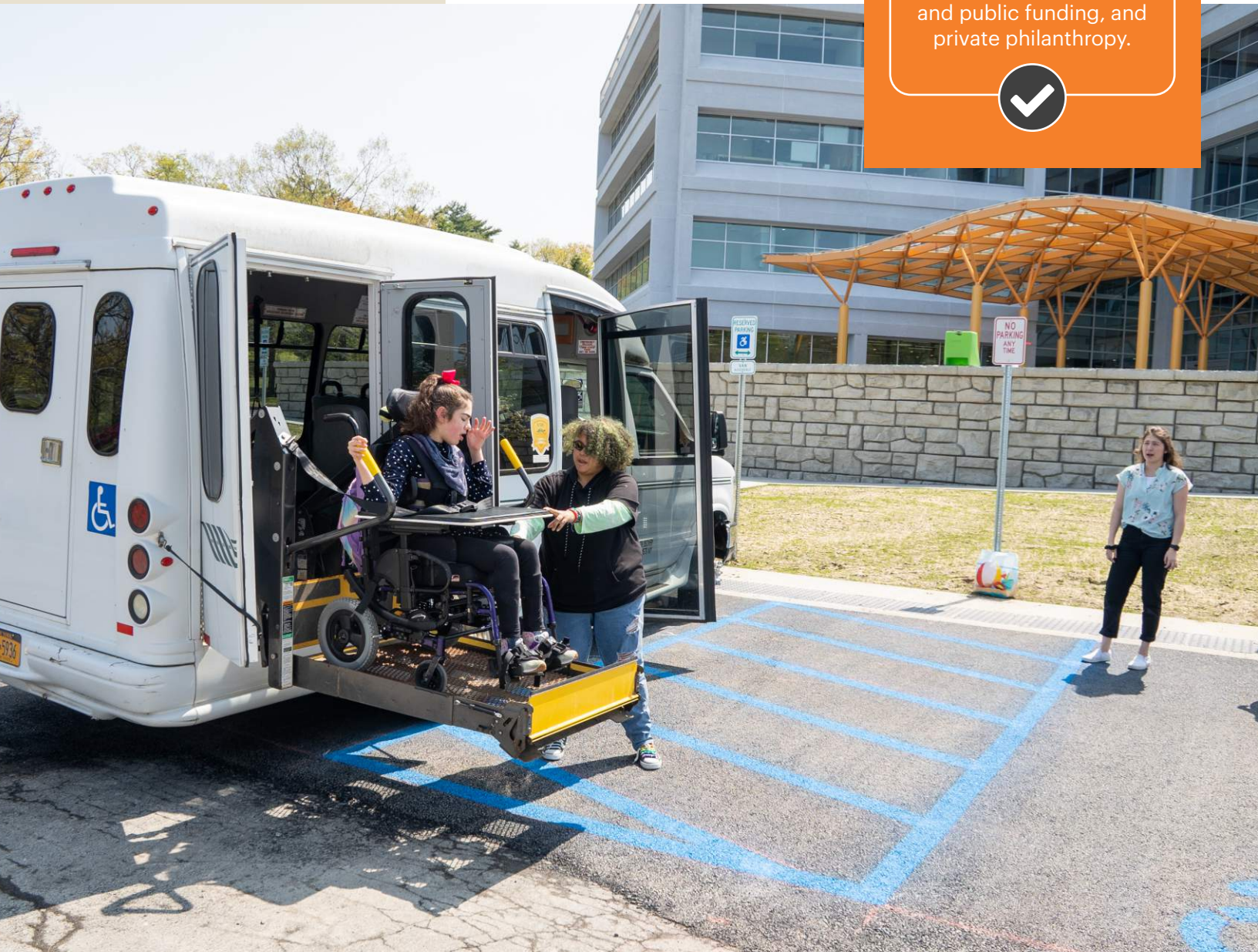
“

“My parents were so sad and stressed out. They were exhausted, and they would fight sometimes. It was so hard for me to see them trying to help my brother, but not knowing how.”

**Center for Discovery Sibling**

”

**There will be no direct charge to families.** The cost of assessment and treatment will be covered through a combination of Medicaid, other insurance and public funding, and private philanthropy.





“


“The one place that could possibly help had a two year waiting list. If only the Children’s Specialty Hospital existed then; there would have been so much more hope and possibility.”

**Parent of 35 year old nonverbal son with severe autism**

”







“Hospitals across the country have reported an alarming rise in patients who become caught in limbo in emergency departments and inpatient units for weeks, months and even years after they are medically ready for discharge.

All evidence points to severe care shortages, especially for individuals... with behavioral challenges and those with the most complex medical needs. Our system of care is flawed, as it's designed for those with a clear care path who do not have complex care needs.”

**The Healthcare Association  
of New York State (HANYS)**



---

## **About The Center for Discovery**

The Center for Discovery (TCFD) is a leading provider of healthcare and education services for more than 1,200 children and adults with complex conditions, medical frailties and Autism Spectrum Disorders, located 90 miles northwest of New York City. Named a Center of Excellence in 2016, TCFD has long been a leader in developing new models of care for individuals with complex conditions. Located on 1,500 acres of land in Sullivan County, TCFD houses school campuses, residences, medical and research facilities, organic and biodynamic farmland, and leased private businesses offering meaningful employment opportunities. Deeply focused on an individual's personal potential and possibilities, rather than a disability, TCFD strives to create better care and unique and challenging opportunities for the most vulnerable populations.

**THE  
CENTER FOR  
DISCOVERY®**



## Partnership and Support

The vision of the Children's Specialty Hospital complex was made possible by public and private partners, including:



THE ALEMANY FAMILY



**Please reach out to The Center's Office of Strategic Outreach and Partnerships for transformative investment and naming opportunities.**

### Michael Rosen

Executive V.P. of Marketing and Strategic Communications  
845-707-8449  
mrosen@tcfcd.org

### Helena le Roux Ohm, Ph.D.

V.P. of Strategic Partnerships  
845-707-8435  
hleroux@tcfcd.org

### Gabrielle Scott

V.P. of Development  
845-707-8509  
gscott@tcfcd.org

